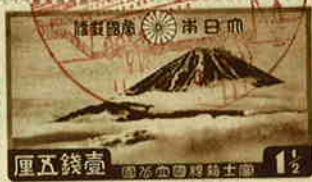




Handwritten Japanese calligraphy in black ink, consisting of several large, expressive characters.

5321

A FIRST-DAY COVER, JULY 10, 1936. FUJI-HAKONE NATIONAL PARK ISSUE.



米國行 (Vertical Japanese text)



Mr Al. Burns,  
THE GOSSIP PRINTERY,  
H O L T O N, Kansas,  
U. S. of A M E R I C A.

5323